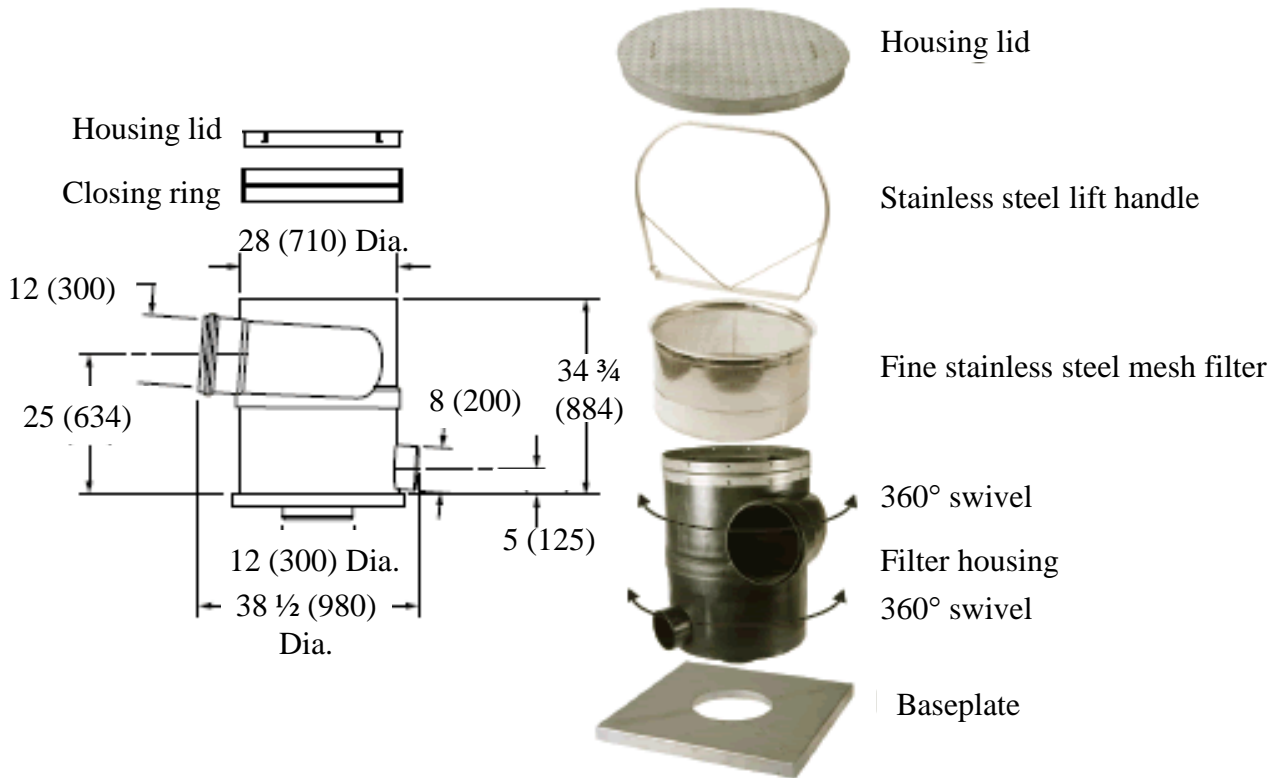


# HIGH CAPACITY VORTEX RAINWATER FINE FILTER (WFF300)

**Function:** The High Capacity Vortex Rainwater Fine Filter is used in installations where multiple downspouts are connected together to a single pipe into the vortex filter. A single unit can filter precipitation from a roof area up to a 32,292 square feet for site irrigation, toilet and urinal flushing, janitorial use, laundries, fire protection, evaporative cooling tower make-up, process water or other non-potable uses. The filter is installed in the underground piping system to direct debris to the stormwater system and divert up to 95% of the clean rainwater to an underground storage tank. (An above grade application is possible.)



**REGULARLY FURNISHED:**

Polypropylene filter housing, closing ring, baseplate, housing lid, 0.015 inch (0.38 mm) stainless steel fine mesh filter and 20 inch stainless steel lift handle.

**ACCESSORIES:**

Final Ring and Safety Kit - To connect cover and prevent falling into the filter housing.  
Baseplate - To support filter housing.  
20 inch Stainless Steel Extension Handle  
36 inch Stainless Steel Extension Handle - To extend the lift handle for removal of the mesh filter for cleaning.

**NOTE:** The vortex fine filter must be mounted plumb for proper operation. For a roof area above 32,292 square feet, additional vortex fine filters should be added. The filter may be manifolded for large roofs.

**NOTE:** Dimensions shown in parentheses are in millimeters.